

Hine Automation's May Newsletter

Thank you for following our emails for monthly updates related to **semiconductor and robotic industry news, recent HA product launches, as well as other helpful resources.**

We are always open to your suggestions! If there is something you'd like to see featured in an upcoming issue, please drop us a note at news@hineautomation.com.

Hine Automation Releases Case Study on New HALO Software

Hine Automation is pleased to share we have released a case study on **HALO**, our newly launched software system for Original Equipment Manufacturers (OEMs). The case study highlights the solutions HALO provides with respect to a fully functional control system as well as some of the product's key features and benefits.

We invite you to review the case study [here](#), and feel free to share it with contacts for whom you believe it would be of interest.



HALO CASE STUDY

HALO: ENTERPRISE INTELLIGENCE AND BIG DATA ANALYTICS ALLOWS BUSINESSES TO ACCESS INFORMATION, COLLABORATE ACROSS DEPARTMENTS, AND MAKE MORE INFORMED DECISIONS

CHALLENGE

Making Data Analytics Work to Generate Timely Insight

Data is compelling if you have access to the full scope of information. Businesses tend to exist in many different silos, internally and externally, and that can be difficult. To thrive requires collaboration and knowledge sharing among employees, partners, suppliers, and customers.

Robust data is about bringing the scattered information together. Creating a single, holistic view is the key to improving business intelligence and empowering the people who need it most, wherever their location.

Traditionally, when an equipment supplier purchases a robotics system from HINE, there's a level of integration at the customer level. The shipment could include a vacuum arm robot, an elevator, an optical aligner system, and a complete IO system that will all need to be configured, creating a lot of work on the front end. Since the handling system is not tested as a complete system, the customer would need to troubleshoot to ensure all parts are communicating successfully.

SOLUTION

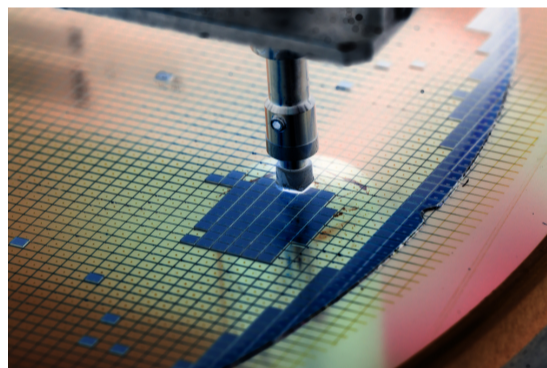
HALO Empowers Users Everywhere

HINE's new proprietary, standards-based software, HALO, was designed to get businesses up and running fast in virtually any industry. HALO manages the testing at the integration level, so the customer receives a configured and ready-to-go solution right out of the box. The configurable software was developed to get businesses up and running faster and more efficiently so they can focus on their core competencies and not spend unnecessary manpower on configuring and testing before everything communicates properly.

HALO allows original equipment manufacturers (OEMs) to provide a fully-functional control system to support Hine Automation and OEM equipment. It is powerful enough to manage needs out of the box, yet, still customizable to tailor and modify to meet specific business requirements. HALO eliminates the disconnected analytics silos you have with departmental or vertical tools. You have full access to information that affects and influences your business. HALO puts testing back at the supplier level to ensure customers receive a high-quality product ready to communicate to all of the customers' robotics and effectively control their system.

For questions related to our HALO case study or for more information, contact us at sales@hineautomation.com.

Semiconductors Touch our Everyday Lives



Technology has changed dramatically over the last couple of decades, and semiconductors have played a huge role in that evolution. Semiconductors form the foundation of modern electronics. They make possible hundreds of technological advances from transistors and microchips to solar cells and LED bulbs. The semiconductor does not just provide millions of gamers with endless hours of battle on Mortal Kombat or offer teens the ability to stay connected with cell phones; it is vital to so many industries. Semiconductors power almost everything in our daily lives.

When semiconductors are introduced into a conversation, microchips and computers are the first connection typically made. What about items in your home? Thanks to semiconductors, your food stays cold in the refrigerator, you do not have to wash clothes by hand, and during the summer months, your AC unit keeps your home at a comfortable temperature.

The medical field has benefited significantly from equipment advancements that enable an increase of control. Without the use of semiconductors, doctors would not be able to navigate more complex and risky surgeries successfully.

Semiconductor chips direct the power and enable extreme precision with temperatures, sensors, and calculations that could never have been accomplished previously. The advancements in semiconductor technology are probably the most notable in the healthcare industry. This technology not only improves the quality of lives, but it keeps those lives safe along the way, too.

Supporting Customers that Make a Difference

The design and manufacturing of robotic components and automation systems that Hine provides can impact the human experience in many ways.

When a product leaves Hine's manufacturing facility, it can end up in a number of applications via an original equipment manufacturer (OEM). What is not always realized is that these customers are accomplishing some incredible and exciting advancements in science.

Today, patients can swallow a tiny pill that houses a camera to detect bowel cancer. Once the pill is swallowed, it takes five to eight hours to travel through the digestive system. During the pill's journey, images are collected and analyzed.

Many companies are pushing the limits and looking for ways electronics can be integrated into the human body. These innovations include biodegradable sensors that can be implanted during reparative surgery to monitor strain on tendons and muscles. The opportunities for advancements in this area seem endless. From brain implants to non-toxic, edible electronics, scientists will continue to innovate and discover applications that will ultimately improve the human experience.

Other companies are innovating in real time to support the global pandemic. With COVID still a concern, medical professionals and other front-line workers need N95 masks, which are in high demand. One lab is working on the development of a reusable, sterilizable respirator that could ease the demand today and during any future health crises.

The innovators will always be researching and forever looking for ways to advance technology to improve our daily lives—whether it be with modern conveniences or with the ability to improve our health and wellbeing. But all these possibilities would not be available without the most fundamental building block, the semiconductor.

For more information on Hine and its ability to integrate with OEM products, contact sales@hineautomation.com.

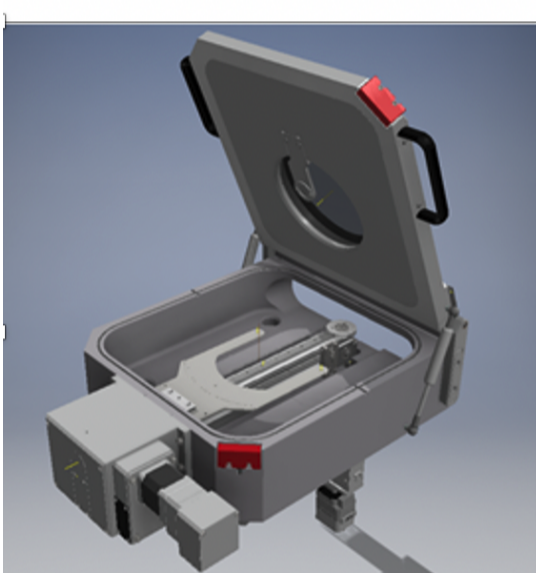
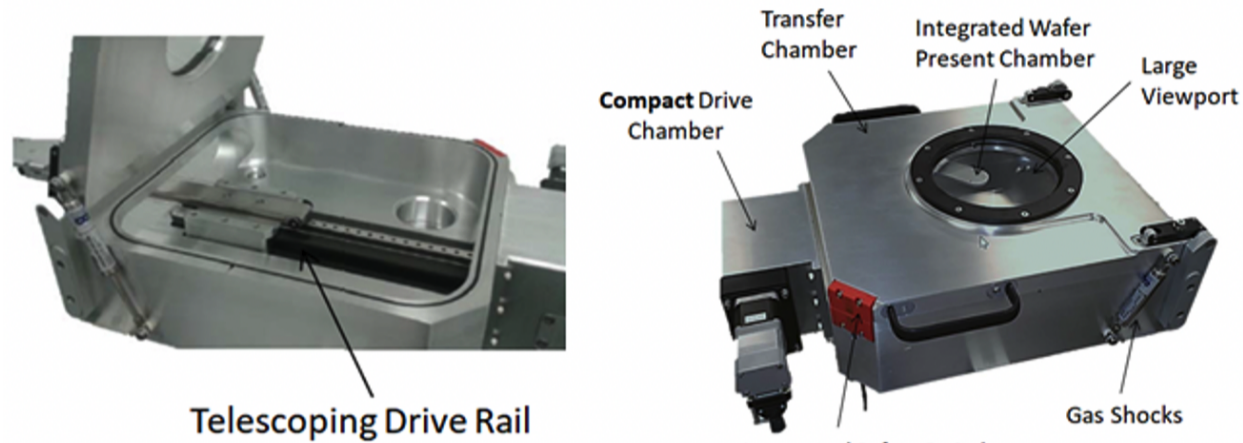


Product Highlight: SL-200T

Introducing the **SL-200T**, a unique offering of our Load Lock (Slider) series.

Generally speaking, load locks are designed to transfer substrates (wafers) and/or substrate holders to and from Original Equipment Manufacturers (OEMs) Process Modules. As with all of our sliders, the SL-200T is equipped with a forward hinged access door and uses a slide mechanism to transfer the wafers. However, the 'T' or telescoping option makes this Load Lock configuration unique.

The SL-200T implements a telescoping Drive Rail to allow standard reach requirements in a smaller footprint.



With the end-effector retracted (figure A above), the SL-200T measures roughly 19 ½ by 16 ½ inches. However, the unique telescoping drive rail allows a reach of 345mm (13 ½ inches) as shown in figure B.

As you can see, the "T" option in our Slider series offers a unique solution to keeping it compact without sacrificing reach!

If you would like more information about Hine Automation's SL-200T, contact sales@hineautomation.com.

Brand Promise Focus: Vision

Continuing with our **Brand Promise** focus series, this month we turn our attention to Hine Automation's **Vision**.

Our Vision identifies Hine Automation's goal to provide the highest level of equipment manufacturing for our customers so they can achieve their full business potential.



Stay tuned for next month's Brand Promise focus!

Behind-the-Scenes with Hine Automation

Take a peek at what we have been working on at Hine Automation recently!

A team of Subject Matter Experts participated in a series of video recordings to share more details about what we do at Hine, how Hine partners with suppliers, as well as to highlight some of our key product offerings.

We look forward to sharing the completed project with you!



[Check out our New & Improved Website!](#)

We would love to hear your thoughts for our upcoming newsletters!



Are there certain topics you would like to see covered in a future Hine Automation newsletter? If so, please email us at news@hineautomation.com with your ideas.

www.hineautomation.com

Please follow us on social for all our latest updates!



Facebook



LinkedIn



Youtube